



GREEN CULTURAL ROUTES

to Greek UNESCO monuments





General coordination:

Dr Anastasia Lazaridou,

Head of the Directorate of Archaeological Museums, Exhibitions and Educational Programmes

Concept, general editor, leaflet editor, english translation editor:

Dr Andromachi Katselaki,

Head of the Department of Educational Programmes and Communication

General editor, leaflet editor, english translation editor:

Nikitas Georgiopoulos,

archaeologist of the Department of Educational Programmes and Communication

Texts:

Eleftheria Vlachou,

archaeologist-museologist

Ioannis Evrenopoulos,

archaeologist of Pre-Historic and Classical antiquities

Nikitas Passaris,

archaeologist of Byzantine and Post-Byzantine antiquities

English translation:

Steven Lever,

Radiant Technologies

Art direction:

Spilios Pistas,

graphic designer of the Department of Educational Programmes and Communication

Cover photo:

Emilianos Gekas, *Meteora. Travel Photographs, Kalampaka, 2018*

For further information, visit www.culture.gr

© 2021 Ministry of Culture and Sports

ISBN 978-960-386-489-9

It is forbidden to copy any part or the whole of this publication without the publisher's permission.



HELLENIC REPUBLIC

Ministry of Culture and Sports

General Directorate of Antiquities and Cultural Heritage



Directorate of Archaeological Museums,
Exhibitions and Educational Programmes
Department of Educational Programmes and Communication



European Union
European Central Bank

Operational Programme
Human Resources Development,
Education and Lifelong Learning

Co-financed by Greece and the European Union



ανάπτυξη - εργασία - αλληλεγγύη



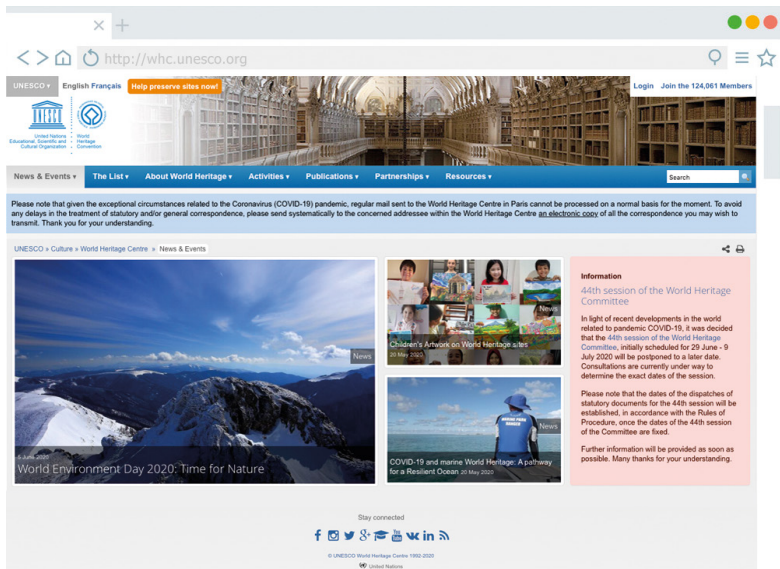


Green Cultural Routes: a countrywide campaign

Green Cultural Routes is an action of the **Ministry of Culture and Sports** which aims to raise citizens' awareness of the protection and promotion of Greece's cultural wealth and natural environment, as part of a wider plan to encourage sustainable development. They were designed and implemented in 2012 by the Directorate of Archaeological Museums, Exhibitions and Educational Programmes of the Hellenic Ministry of Culture and Sports as part of its participation in the national action plan for education and sustainable development. Since then, they have taken place every year on a date close to World Environment Day, which is celebrated on 5 June, and are organized by the Department of Educational Programmes and Communication of the Directorate of Archaeological Museums, Exhibitions and Educational Programmes. Each year, the Regional and Special Regional Services of the General Directorate of Antiquities and Cultural Heritage undertake the coordination at regional level, creating local networks with cultural or environmental organisations in order to organise a variety of actions, such as educational programmes, thematic guided tours, walks, hikes, cycling tours, artistic events, informative presentations, etc.



UNESCO: The international organisation for World Heritage Sites



UNESCO, the United Nations Organisation for Education, Science and Culture, is extremely active in the protection of monuments, nature, and people. As part of this, it compiles and updates a list of cultural and natural World Heritage Sites, while the list of sites under threat

draws our attention to the responsibility we all share towards our cultural heritage.

In partnership with UNESCO, Greece has taken initiatives to ameliorate the impact of climate change on cultural reserves.

Climate change is a global phenom-

Green details

Mount Athos and Meteora are the only Greek entries in UNESCO's list that are included under registration criterion VII: superlative natural phenomena and exceptional natural beauty!

enon, with a range of consequences: increased sunlight and ultraviolet radiation; decreased rainfall; rising sea levels; extreme fluctuations in temperature; powerful winds... all affect the environment as well as monuments.

Additionally, tourism and the continual inhabitation of organised settlements and cities are factors that cause damage and deterioration and make managing them incredibly difficult.

It is characteristic that, in 2009, five years after being entered, Dresden was removed from the list of world heritage due to the extensive changes made to its layout.

'Green' development and 'green' cultural tourism constitute great ventures with many benefits for all.

They are an opportunity to learn more about the monuments of this land that are currently registered in UNESCO's List of World Heritage Sites and for us to think about what we can do to protect them. Let us take, for the **tenth consecutive year**, Green Cultural Routes. This year, they will be 'greener' than ever, since they do not require going anywhere and do not burden the environment. Our guides will be the internet, the wealth of material on the webpages of the Ministry of Culture and Sports, and our imagination.

We will see the relationship between the monuments, the environment, and the past. **We will learn** about the threats they are facing in the present and **we will take action** for the future.



© divaninmeter.abotel.com

TAKE THE DIGITAL TOUR

UNESCO: World Heritage Center:
<https://whc.unesco.org/>

Greek UNESCO monuments:
https://whc.unesco.org/en/interactive-map/?search=&id_states=gr

List of monuments in danger:
<https://whc.unesco.org/en/danger/>

3D visits to monuments all over the world:
<https://cyark.org/>

and monuments in danger:
https://www.youtube.com/watch?time_continue=2&v=2Wh5DU5Vpn0&feature=emb_logo

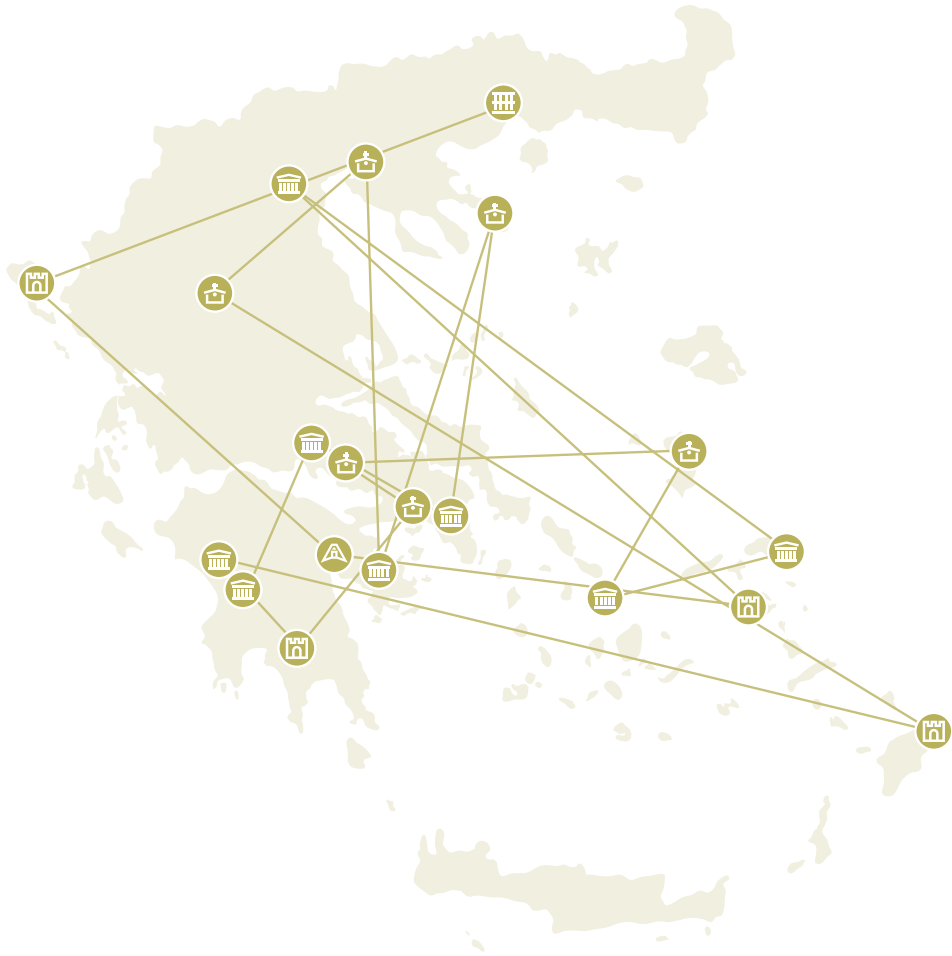
Factors that threaten cultural heritage:
<https://whc.unesco.org/en/factors/>

Green Cultural Tours to Greek UNESCO monuments

Greece has 18 listings, including monuments, archaeological sites, and settlements. In terms of chronology, they cover all the periods from the prehistoric to more recent times and are spread geographically throughout almost the whole of Greek territory.

Our suggestion for this year's Green Cultural Route is for you to go in chronological order of entry into the list (from 1986 to 2016), however, with the help of the interactive map, you can take the tour thematically or geographically.

Let's start our journey!



 Mycenaean period

 Ancient, Classical period

 Hellenistic, Roman period

 Byzantine, Post-Byzantine period - churches

 Byzantine, Post-Byzantine period - castles, settlements



Temple of
Apollo Epicurius
in Bassae



Ellis Prefecture,
Western Greece



Classical period



Date of entry
into UNESCO's
List of World
Heritage Sites:
1986

A 'plague' temple



© ilia-olympia.org

One of the best-preserved monuments from the Classical period is **Apollo Epicurius**, the first Greek entry into UNESCO's List of World Heritage Sites.

The temple is in harmony with the rocky Bassae landscape and is perfectly adapted to the natural environment, following a basic principle of ancient civilisations: respect for nature.

The good state of preservation was not a matter of chance, as it is located in an inaccessible mountainous area, at the borders between Ellis, Arcadia and Messinia, on the

western slope of mount Kotyilion and 13 kilometres from ancient Phigaleia, to which it used to belong administratively. Bassae owes its name to the morphology of the ground, the many small valleys (*vassae or vis-sae*) that open in the rocks. Far from settlements and human intervention, the temple remained forgotten until 1765, when it was located by the French architect J. Bocher.

Exceptionally **topical** due to the current pandemic, the sanctuary was built in around 420-400 BC, in honour of the god Apollo, who helped during the epidemic that had,

Green details

The first known Corinthian column capitals, decorated with acanthus leaves, were found at Apollo Epicurius. It is said that the central column reflected the first rays of the summer solstice, representing the eternal Apollonian light.

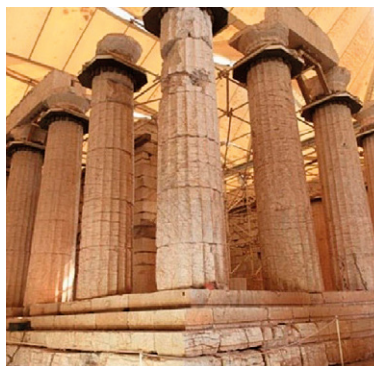


© blogspot.com

according to one version, hit the region. This was why it was called Epicurius, meaning 'he who contributes' or 'he who comes to help'.

According to the traveller Pausanias, the temple was a work of the renowned Iktinos, the architect of the Parthenon. Here, the three architectural styles of antiquity are combined: Doric, Ionian, and Corinthian. Frequent frosts are a serious problem for the temple, which is located at an altitude of 1,130m. Pausanias expressed his admiration for the main building material used in the temple, the local limestone-schist, which is highly susceptible to erosion. When frozen by cold temperatures, water becomes trapped in the pores and damages the building material. The horizontal surface on which the temple is built was made artificially

on the slope by the addition of a layer of clay to the natural rock, a factor that, over time, caused damage to the foundations and subsidence. The unstable ground and frequent frosts coupled with the limestone material made it necessary to cover the building with a permanent roof in 1987.



© www.kalmar.gr

TAKE THE DIGITAL TOUR

The Temple of Apollo Epicurius:

http://odysseus.culture.gr/h/2/gh251.jsp?obj_id=1142

Threats to the monument:

<http://followodysseus.culture.gr/Portals/54/Material/Telika/Suntirisi/SuntirisiPDF/MathePerissotera.pdf>
p. 4-8, 35-37

The roof and conservation work:

<http://followodysseus.culture.gr/Portals/54/Material/Telika/Suntirisi/SuntirisiPDF/ProliptikiSuntirisi.pdf>
p. 6-7

http://epan2.antagonistikotita.gr/uploads/Apofash_Entakshs_Epikourio_.PDF

Jean-Daniel Pollet - ΝΑΟΣ ΕΠΙΚΟΥΡΙΟΥ ΑΠΟΛΛΩΝΑ, Βάσσης, (Bassae), Φιγάλειας 1964

<https://www.youtube.com/watch?v=tU-dyXJ6R0>



Archaeological
site of Delphi



Prefecture
of Phocis,
Sterea Ellada



Classical
period



Date of entry
into UNESCO's
List of World
Heritage Sites:
1987

The eternal Delphic landscape



© wikimedia.org

The most famous oracle of ancient times was located at the foothills of Parnassos mountain, between two huge rocks known as the *Phaedriades*. The complex extends over an impressive, still untouched, natural landscape that is charged with special energy, leaving the visitor in awe.

The impressive monuments are harmoniously combined with the im-

posing natural environment on three terraced levels formed on the slope, following the steep gradient of the rock. To the east, the sacred temple of Athina Pronaia includes only small-scale buildings, as it spreads across a plateau of limited size that did not allow for larger structures.

In the ravine between the *Phaedriades* is the Castalian Spring, which had a

Green details

According to myth, the first temple, which was dedicated to the god Apollo, was made of laurel branches, the second from beeswax and feathers, and the third from bronze. The laurel, a plant sacred to the god, played an important role in prophesying: the Pythia would chew laurel leaves and inhale fumes from a fissure in the sanctuary floor. In a state of ecstasy, she would give the incomprehensible prophecies to the priests for interpretation.

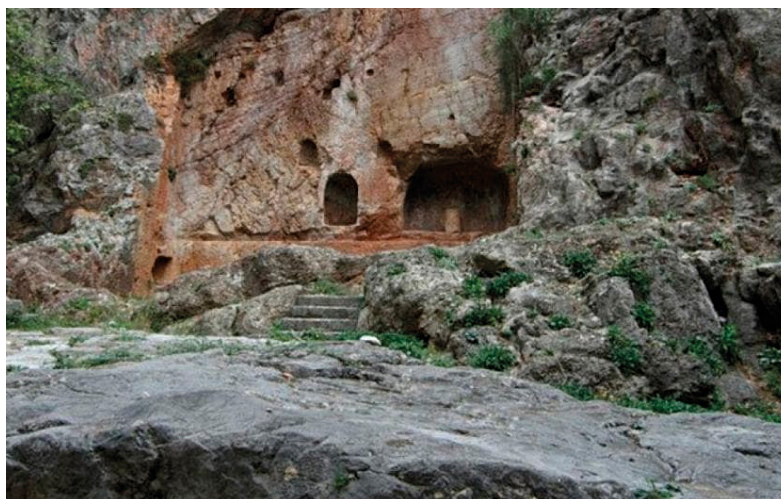
direct connection with the oracle: it was here that the *Pythia*, priests and pilgrims, as well as the *theopropoi* (messengers sent to the oracle seeking a prophecy) washed themselves for purification.

It is impossible to imagine Delphi separated from the 'Delphic landscape': the protection zone extends over 520km² and ends in Itea town, while the wider area includes seven 'Natura' areas.

Nothing in excess

One of the best-known Delphic commands and a wise message for our

times. We should do nothing in excess. The Delphic landscape constitutes a lesson in measure and balance.



© rodoreport.gr

TAKE THE DIGITAL TOUR

The official website of the site, with a wealth of information and activities:

<http://www.delphi.diadrasis.net/>

Threats to the monument:

<http://followodyseus.culture.gr/Portals/54/Material/Telika/Suntirisi/SuntirisiPDF/MathePerissotera.pdf>
p. 4-8, 21-28, 31-34

The Delphic landscape:

<https://www.fokidanews.gr/46762/δελφικό-τοπίο-η-σημαντικότερη-κληρονομία>

The theatre at Delphi:

<https://en.calameo.com/read/004470083bea212c60168?authid=MeHOAtd3Ab7T>

The snow-covered Delphic landscape:

https://www.thetoc.gr/politismos/article/i-afati-mageia-tou-xionismenou-delfikou-topiou?fbclid=IwAR0_TsNkek39bORXpOnr3bElrgD9sMjHL8qpoutS4Nbb_KiRrgx2sPk7wiM

Delphi - a 3D recreation:

<https://www.youtube.com/watch?v=XtaN9uYhOa0>



The Acropolis
of Athens



Athens,
Prefecture
of Attica



Classical
period



Date of entry
into UNESCO's
List of World
Heritage Sites:
1987

The rock of the sacred olive tree



© www.in.gr

With a history of a thousand years, the hill of the Acropolis is home to the shining symbol of Athenian democracy and one of the most recognisable monuments in the world. It is a natural fortification of 156m in height in the middle of the Athenian plain and is inaccessible from all sides except the west, where the main entrance to the site has been since prehistoric times.

The 'sacred rock' is the ultimate expression of the adaptation of architecture to the natural environment. This perfectly balanced combination

comes together in a monumental site of unique beauty, which includes a complete series of architectural masterpieces of the 5th century BC. Among the most sacred spots on the rock of the Acropolis is the olive tree that the goddess Athena gave to the inhabitants in her efforts to beat Poseidon during their competition to claim Athens. The Athenians approached the tree with great reverence, tying ribbons on its branches and hanging offerings and fruit. It was located at the *Pandroseion*, next to the *Erechtheion*, and was burned

Green details

The wildflower *Micromeria acropolitana* (*Micromeria* of the Acropolis) is an endemic plant that grows only on the sacred rock of the Acropolis and nowhere else in the world. In January 1981, a presidential decree included the plant in the list of plants protected by the Greek State.

by the Persians when they invaded Athens in 480 BC. However, the burned tree was reborn, as was the city. The *moriai* were the descendants of the first olive tree: the prize at the Panathenaic Games was an amphora filled with oil from its fruits.

What are the most significant factors in the wear and erosion of the Acropolis complex?

- **Environmental/air pollution:** the Acropolis is exposed to the extremely polluted atmosphere of the capital. Soot, petroleum hydrocarbons and airborne particles settle on the surfaces, causing dark crusts.

- **Acid rain:** the combination of sulphur dioxide and oxides of nitrogen with atmospheric moisture turns the marble into plaster and erases the last traces of painting on the once highly colourful monument.
- **Tourists/visitors:** in August 2019, 18,000 visitors came to the Acropolis during just one day!
- **Vegetation:** sixty-six species of aggressive and very resistant plants grow on the Acropolis and must be regularly removed by hand, without the use of chemicals that would afflict the monuments, the environment, and people.



© blogspot.com

TAKE THE DIGITAL TOUR

Take a 'virtual' tour of the Acropolis:
<http://www.acropolisvirtualtour.gr/>

Explore the Attic landscape and environment:
<http://followodyseus.culture.gr/el-gr/θεματικέσενότητες/εισαγωγήστοαττικότοπίοκαιπεριβάλλον/αττικότοπίοκαιπεριβάλλον.aspx>

The causes of damage to the Acropolis:
http://repository.acropolis-education.gr/acr_edu/bitstream/11174/356/1/journey_01_el.pdf
<http://followodyseus.culture.gr/Portals/54/Material/Telika/Suntirisi/SuntirisiPDF/MathePerissotera.pdf>

An experiment to help understand acid rain:
<http://followodyseus.culture.gr/Portals/54/Material/Telika/Suntirisi/SuntirisiActs/KsudiKaiAugo.pdf>

The damage to monuments:
<https://www.kathimerini.gr/326620/article/epikairothta/kosmos/vakthria-trwne-marmara-kai-petres-arxaiwn-mnhmeiwn>

Visiting the Acropolis:
<https://www.protagon.gr/epikairota/tis-meres-pou-vouliakse-i-akropoli-44341892523>

Interactive tour of the Acropolis in the time of Pericles:
<https://www.youtube.com/watch?v=7hcVCmuoOYM>
<http://www.hellenic-cosmos.gr/>



Mount Athos



Chalkidiki,
Central
Macedonia



Byzantine,
Post-Byzantine,
and modern
period



Date of entry
into UNESCO's
List of World
Heritage Sites:
1988

In the garden of the Virgin Mary



© wikimedia.org

According to tradition, the Mother of God together with St John the Evangelist sailed to Athos. Bad weather forced them to disembark at the location now occupied by the Iviron Monastery. The Virgin then asked her son to grant her the area, which was beautiful. And so, the peninsula became the 'Virgin's garden'.

The Athonite State, with its 20 monasteries, extends over a landscape of unequalled beauty, with natural charm and idyllic densely vegetated

woodland slopes. Mount Athos was possibly the largest artistic centre of Byzantine and Post-Byzantine art, while today, it is a point of reference for Orthodox Christianity.

The Athos Peninsula combines a wide range of climatic types, as its altitude rises steeply from sea-level to 2,033m. The monasteries are in harmony with the varied natural environment and all the other buildings (hermitages, dockyards, etc.), lending an intense sense of the spiritual, so

Green details

When the German botanist and phytogeography expert August Griesebach visited the peninsula in the mid-nineteenth century, he noted that nowhere else in Europe and the Balkans were there forests so great, so dense and with such a variety of species.

that the visitor finds himself closer to God. The Garden of the Virgin is covered by forests of oak, chestnut, fir and black pine, and many other rare forms of *flora*, and is home to some of the richest *fauna* in Greece: around 131 species of bird, 37 of mammal, 14 of reptile and 10 of amphibian. This unique environment is an integral part of World Heritage.

After 1924, during agricultural reforms, the monasteries began to exploit the forests, which resulted in them being transformed into deciduous, i.e., forests where regeneration takes place with shoots and not with seeds or seedlings. These forests require greater management to ensure the stability of the ecosystem. Far from the cities and air pollution,

the forests of Mount Athos remain mostly untouched. Despite this, they are also in danger from climate change: fires burn down the forests and often threaten the monuments themselves. In turn, other natural disasters, such as floods accompanied by powerful winds, damage the natural and constructed landscape of Athos.



© wikimedia.org



© wikimedia.org

TAKE THE DIGITAL TOUR

Mount Athos:

http://odysseus.culture.gr/h/3/gh351.jsp?obj_id=2367

Athos digital heritage:

<https://www.mountathos.org/el-CR/Home.aspx>

The fire of 2012:

http://aegis.aegean.gr/aegis_files/pyrosvestiki_agio_crosssmallpdf.com.pdf

Digital archive of information and culture of the monasteries of Mount Athos:

<https://athoskivotos.eu/>

Interactive presentation of Mount Athos for pupils and educators:

<http://photodentro.edu.gr/lor/r/8521/7644>

Documentary on the Athonite State:

<https://www.youtube.com/watch?v=U5pwfLRI-R8&t=203s>

Digital tour of the monasteries:

<https://proskynitaria1.mountathos.org/>



Archaeological site of the Sanctuary of Asclepios at Epidaurus



Argolis Prefecture, Peloponnese



Classical period



Date of entry into UNESCO's List of World Heritage Sites: 1988

A grove to heal body and spirit



© cdm-elias.com

The combination of an area of greenery in a valley that runs along the foothills of mout Kynortio in Argolis with a spring that gushes plentiful water creates a spot of idyllic beauty that heals body and spirit. The Sanctuary of Asclepios at Epidaurus, with its direct connection to nature, was the perfect environment to foster the worship of the protector of medicine, the god Asclepios. The location, the climate, the vegetation, and the water all work together as factors in healing. The therapy included plenty of water, good

food and sleep, and, when combined with the role of the theatre and the process of catharsis, it is reminiscent of holistic medicine: the view, the scents, the tastes, are all conducive to a transcendental experience. We all know the theatre of Epidaurus; its perfect adaptation to the landscape and its wonderful view, as well as its outstanding acoustics, which are thanks to the combination of the perfectly symmetrical design of the construction and the choice of a location with a suitable incline to strengthen the reflection of sound.

Green details

'The geometric symmetry of this construction was entertained by the depth of the robust pines with their freestyle outlines and, even further in the distance, the irregular triangles of mountains, drawn in the flaming gold litany of the sunset. This is how the performance began, in the evocative atmosphere of the early twilight, within a violet dusk'. ...wrote Spyros Melas, enchanted by the natural 'scenery' of the performance of 'Hippolytus' (Estia newspaper, 14th July 1954).



© googleusercontent.com

But beyond admiring its aesthetics, let us consider the religious, cathartic, and therapeutic role that it served.

The water provided spiritual cleansing and bodily healing, which is why its provision was ensured by a complicated system of plumbing. Today, significant restoration interventions have been made in an attempt to protect the monument from water erosion.

Art above all?

Actors, directors, technicians, spectators... Heavy scenery, unsuitable material, high heels, food and drink... At Epidauros in 2007, chemicals fell

into an altar to the right of the stage that took conservators a whole month to remove.

Monuments and nature are 'injured' easily and need our care and attention.



© blogspot.com

TAKE THE DIGITAL TOUR

The Archaeological site of the Sanctuary of Asclepius at Epidauros:

http://odysseus.culture.gr/h/3/gh351.jsp?obj_id=2374

A tour of the Asklepion lead by Pausanias:

<http://followodyseus.culture.gr/Portals/54/Material/Telika/Ugeia/AsklipieioEpidaourou.pdf>

Material about the ancient theatre:

<https://en.calameo.com/read/004470083aded2c35c1b9?authid=9wzmNp8Yjt2b>

Threats to the monument:

<http://followodyseus.culture.gr/Portals/54/Material/Telika/Suntirisi/SuntirisiPDF/MathePerissotera.pdf>
p. 4-8, 31-34, 44-46

The production of 'Hippolytus' at Epidauros in 1954:

<http://www.nt-archive.gr/playMaterial.aspx?playID=781>

3D representation of the Asklepion:

<https://www.youtube.com/watch?v=cMQXs0MC9Kc>

A dramatised recreation of the 'Healing of Aristarchus':

<https://www.youtube.com/watch?v=x8hAV4Ttxtg>



Paleo-Christian and Byzantine monuments of Thessaloniki



Thessaloniki Prefecture, Central Macedonia



Paleo-Christian and Byzantine period



Date of entry into UNESCO's List of World Heritage Sites: 1988

A Byzantine mega city



© www.thebyzantinelegacy.com

The city of Thessaloniki is 'married' to the sea; the bride of the Thermaic Gulf. Its location in the innermost part of the gulf is highly strategic. The Thermaic is the largest gulf in the Aegean, and the port of Thessaloniki –one of the most secure– is the gate to the Balkans. Before it became the 'co-capital', Thessaloniki was the 'co-ruler': during the Byzantine period, the city had a leading role in the Balkan area in terms of intellectual and artistic

production and has kept its metropolitan character throughout its history. Following the christianization



© wikimedia.org

Green details

The impressively sized dome (24m diameter) of Agios Georgios church, known as the Rotunda, is decorated with mosaics of exceptional mastery, arranged in three parallel zones. The decoration in the middle zone consists of a weave of branches and fruit that is reminiscent of an orange grove (5th century AD).

of the Slavs, the cultural influence of Thessaloniki in the Slavic world became even more pronounced. Today, the city is an open-air museum of Byzantine art, as the preserved monuments cover Byzantine artistic production from the 4th to the 15th century AD.

The historic centre of Thessaloniki has maintained the urban plan of the Ottoman city, and there are monuments from almost all periods: churches, public buildings, baths, and walls from the Roman, paleo-Christian, Byzantine, and Ottoman periods. The great fire of 1917 scarred the city, devastating many

monuments, including the renowned basilica of Agios Dimitrios.

The fire even destroyed stone: the massive increase in temperature expanded the crystals suddenly and shattered the rocks. The ‘calcified’ surfaces are like wounds, vulnerable to wear and tear.

The plan of Thessaloniki was altered by crowded construction and the multi-storey apartment buildings that began to be constructed during the following decades. The development of the city has become a burden on the environment, resulting in air pollution that causes significant damage to the monuments.



© wikimedia.org

TAKE THE DIGITAL TOUR

The Byzantine monuments in Thessaloniki on the UNESCO list:

http://odysseus.culture.gr/h/3/gh3530.jsp?obj_id=9141

<https://whc.unesco.org/en/list/456/>

<https://www.youtube.com/watch?v=h8aCl9g0MdY>

Threats to the monument:

<http://followodysseus.culture.gr/Portals/54/Material/Telika/Suntirisi/SuntirisiPDF/MathePerissotera.pdf>
p. 29-30, 35-37

The exhibition ‘1917: Monuments in Flames’:

<https://yougoculture.com/news-greek/mnimeia-stis-floges>

3D digital recreation of the walls of Thessaloniki:

<https://www.youtube.com/watch?v=YwGOetEi2iM>

Digital recreation of the Galerian palace complex:

https://www.youtube.com/watch?v=i2R11kio3_A

Digital historical tours of Byzantine Macedonia:

<https://www.youtube.com/watch?v=MNYeblcN0hc>



Meteora

Trikala
Prefecture,
ThessalyByzantine, Post-
Byzantine and
modern periodDate of entry
into UNESCO's
List of World
Heritage Sites:
1988

Heavenly rocks



© wikimedia.org

In an otherworldly setting, which inspires a sense of awe and exudes mystery, natural beauty is uniquely paired with Byzantine architecture. Depending on the weather and the season, the imposing rocky masses change appearance and form. During the day, the view from the top is unique, as it stretches to the slopes of mout Koziakas and the Pindos range to the west. During the night, under the light of the moon, the rocks resemble the giant forms of Titans.

The monastic community of Meteora is the largest and most important in Greece after Mount Athos. For many centuries, it was a centre of

learning and arts. The buildings blend harmoniously with the geological phenomenon of the scattered rocks, which are unique in the world. Today, six monasteries remain inhabited, others are in ruins or are retreats or hermitages.

About thirty million years ago, the area of Meteora, which was a lagoon, was at the estuary of a massive river. At some point, the course and flow of the river changed. As the waters receded, the deposits at the mouth of the river were revealed: a pile of stones and mud that was gradually shaped by geological upheaval into inaccessible pillars of sandstone, the

Green details

Depicted in the monastery church of Agios Nikolaos of Anapafsa is a rare representation of the naming of the animals by Adam. The frescoes are the oldest-known signed work of the Cretan Theophanis Bathas-Strelitzas (1527).



© Ασημένιος Γκρέκος

'stone forest' of Meteora. Meteora is endangered by climate change. Intense natural phenomena, such as torrential rains and strong winds, are likely to cause substantial damage to the monuments, erosion of the rocks, and rock falls.

The 'bachelors' of Meteora

The Meteora area is an important habitat for various wild species (wolves, bears, birds of prey). The Egyptian vulture is the smallest species of hawk. It is one of the cleverest birds, which uses stones as a tool to break eggs. While, in the past, it was one of the most common species in Thessaly, today, it is one of

the most threatened in Europe. The most common threat to birds of prey is poisoning. In the 1980s, Meteora had the largest population in the whole of the Balkans: 50 pairs. Today, only two male Egyptian vultures remain in the area, with no way of propagation.



© wikimedia.org

TAKE THE DIGITAL TOUR

Meteora:

http://odysseus.culture.gr/h/3/gh351.jsp?obj_id=2442

Centre for the Digital Projection of the History and Culture of Meteora:

<https://www.meteorarocks.com/el/sights/digital-projection-centre-of-meteoras-history-and-culture/>

Documentary 'METEORA THE ROCKS OF THE GODS':

<https://www.youtube.com/watch?v=AAcJfczXNS8>

Documentary Meteora 'The Catacombs of the Sky':

<https://www.youtube.com/watch?v=Qjtfu4lfElg>

Threats to the monument:

<http://followodysseus.culture.gr/Portals/54/Material/Telika/Suntirisi/SuntirisiPDF/MathePerissotera.pdf>
p. 38-43

The Egyptian vultures of Meteora:

https://www.ethnos.gr/ellada/43984_oi-teleytaioi-asproparides-ton-meteoron



The medieval city of Rhodes



Dodecanese Prefecture, Southern Aegean



Late Byzantine and Post-Byzantine period



Date of entry into UNESCO's List of World Heritage Sites: 1988

In the city of the Grand Master and the knights



© wikimedia.org

Built on the north tip of the island, the city of Rhodes is a port of strategic importance, as it was at a hub of maritime trade routes. The walled settlement that it gradually developed into, and which survives to the present day, is a typical example of a classic multicultural Mediterranean city. Every civilisation left its mark, and the fusion has formed a charming whole that takes us back in time.

Ancient Rhodes was built in accordance with the perfect urban plan, known as the 'Hippodamian'. During the Middle-Ages, it was given walls, initially by the Byzantines and then by the Latins. In 1309, the rule of the knights began, and Rhodes evolved into the administrative and political centre of the state of **the Knights of St John (the Hospitallers)**. In 1522, it came under the control of

Green details

'Secret' gardens from the time of the knights remain hidden in the medieval alleys of the city; the largest being the Auvergne Garden. The garden of the Marc de Montalembert Foundation hosts 50 species of trees, flowers, herbs, and other plants mentioned in a manuscript from 1484 by the knight Guillaume Caoursin: lemon, tangerine, orange trees, medlars, myrtles, laurels, anemones, lavender, mint, thyme, thistle, sandalwood, jasmine, sagebrush, dittany, narcissus, violets, daffodils, 13 types of rose and many other plant species.

the Ottomans and then the Italians in 1912.

The powerful city walls withstood the siege by Mohammed II the Conqueror in 1480 but not salt and humidity.

The walls of Rhodes were built from the local sandstone, which has a high level of water absorption and large pores. When the temperature rises, large salt crystals form as a white crust. This accelerates the erosion of the monuments and growth of plants and micro-organisms.

These days, cosmopolitan Rhodes is an exceptionally popular destination

for tourists from all over the world. The buildings take on new uses and, although preservation is very demanding, the city is continuously evolving.



© wikimedia.org



© wikimedia.org

TAKE THE DIGITAL TOUR

The city of Rhodes:

http://odysseus.culture.gr/h/3/gh351.jsp?obj_id=7029

The castles of Rhodes:

<https://www.youtube.com/watch?v=A59oemS3WWA>

The garden of the Marc de Montalembert Foundation:

<https://www.in.gr/2018/06/24/plus/features/idryma-marc-de-montalembert-kai-o-spanios-mesaionikos-kipos-sti-rodos/>

Threats to the monument:

<http://followodysseus.culture.gr/Portals/54/Material/Telika/Suntirisi/SuntirisiPDF/MathePerissotera.pdf>
p. 11-14, 44-46

The mighty besieger:

<https://www.tanea.gr/2010/01/28/greece/panisxyros-poliorkitis-i-almyra/>

Tour of medieval Rhodes:

<https://www.youtube.com/watch?v=LsuGX5Aijqk>

Work to restore the medieval city of Rhodes:

<https://www.youtube.com/watch?v=k09ksZkdUOg>



Archaeological
site of Olympia



Ellis Prefecture,
Western Greece



Classical
period



Date of entry
into UNESCO's
List of World
Heritage Sites:
1989

'The exquisite place'¹



© wikipedia.org

The unparalleled natural beauty of the landscape of Olympia was worthy of the god Zeus: the Altis, the Sacred Grove –densely vegetated with wild olives, plane trees, elms, and oak– was formed during the 10th-9th centuries BC to host the worship of the father of the gods and men.

1. Pindaros

The south-west foothills of the verdant Kronios Hill, at the confluence of the Alpheius and Kladeos rivers, was destined to be the birthplace of the most powerful institution for peace, fair play, and the uplifting of body and mind: the Olympic Games. Diodoros Siculus mentions that Hercules chose this particular spot

Green details

Wreaths woven from wild plants were the award in ancient games: daphne in Pythia, wild celery in Nemea, pine and wild celery in Isthmia, and the well-known kotinos from olive branches in the Olympic games. However, Pausanias notes that, during the first five years, the winners were not crowned with a kotinos but received an apple. Just think in how many other myths this fruit was the apple of discord.



© wikimedia.org

precisely for its beauty: *selecting for such a great festival the most beautiful of places, which was the plain lying along the banks of the Alpheius river* (Diodoros Siculus 4, 14)

Earthquakes and the flooding of the Apeios and Kladeos rivers frequently cause damage to Olympia. It has been estimated that the ground below the Temple of Zeus subsides up to 1.6mm a year, and, according to calculations made by satellite, in a thousand years, ancient Olympia may have sunk by one metre or more. Extremely high temperatures, drought, and strong winds are some of the causes behind the devastating wildfires that broke out in the Peloponnese in the summer of 2007. In Olympia, the Kronios Hill was

completely burned, and the monuments as well as the museum were in danger.

Significant anti-erosion and anti-flooding protection projects, re-forestation, and the restoration of the vegetation, as well as fire management, aim to protect Olympia for the future.



© worldphotowalk.com

TAKE THE DIGITAL TOUR

Ancient Olympia:

http://odysseus.culture.gr/h/3/gh351.jsp?obj_id=2358

<https://www.youtube.com/watch?v=WzZ6fbbuVPw>

<http://www.progettotraiano.com>

Threats to the monument:

<http://followodysseus.culture.gr/Portals/54/Material/Telika/Suntirisi/SuntirisiPDF/MathePerissotera.pdf>
p. 29-30, 31-34



Archaeological
site of Mystras



Laonia
Prefecture,
Peloponnese



Late Byzantine
period



Date of entry
into UNESCO's
List of World
Heritage Sites:
1989

‘...he came upon a strange hill, cut off from a mountain’¹



© wikimedia.org

The Byzantine castle of Mystras climbs up the slope of a naturally fortified hill that looks as if it has been cut off sharply from the imposing and lofty Taygetos, the ‘masculine mountain’ as characterised by the greek writer Stratis Myrivilis. In a superbly strategic position –only

accessible from the north and east sides– the hill rises to 300m and provides an unobstructed view of the Eurotas plateau and neighbouring mount Parnonas.

Mystras, the seat of the Despotate of Morea, was a shining centre of philosophy, art, and culture, but also

1. Chronicle of the Morea

Green details

Six lush olive trees complete the right part of the depiction of the Assumption in the katholikon of Pantanassa monastery. The naturalistic rendering of the olive trees, is shown in the thick foliage with silver highlights and the clearly visible fruits. Olive trees are also depicted on the scene of the Assumption in the church of Perivleptos monastery. Not by chance: the olive together with citruses are the basic crops on the neighbouring Spartan plain.

a superb example of late Byzantine city fortification, as it is filled with houses, mansions, squares, churches, and monasteries. It was from the palace of Mystras that Constantine Palaiologos set out to be crowned emperor in Constantinople in 1449, shortly before the City fell.

The dominant position of Taygetos in the area facilitated the development of a unique ecosystem, with many endemic species of plants: of the 700 species that grow in the area, around 30 are not found anywhere else in the world.

The rich vegetation creates an enchanting landscape but is often a threat to the monuments themselves: the roots of plants shatter the building material and hold in moisture. This promotes the growth

of lichens and various micro-organisms. Regular cleaning involves the careful removal of plants by hand and the use of special mowers. The systematic preservation of the castle is a constant battle against the wear and tear of time.



© wikidata.org



© wikimedia.org

TAKE THE DIGITAL TOUR

The castle of Mystras:

http://odysseus.culture.gr/h/3/gh351.jsp?obj_id=2397

Digital historical tours: Mystras:

<https://www.youtube.com/watch?v=gLBX8-VQDB8>

Threats to the monument:

<http://followodysseus.culture.gr/Portals/54/Material/Telika/Suntirisi/SuntirisiPDF/MathePerissotera.pdf>
p. 21-28



Monasteries of Daphni, Hosios Loukas, Nea Moni of Chios



Attica Prefecture, Boeotia Prefecture, Sterea Ellada, Chios Prefecture, Northern Aegean



Mid-Byzantine period



Date of entry into UNESCO's List of World Heritage Sites: 1990

Imperial gifts



© wikimedia.org

Three significant monastic complexes from the Mid-Byzantine period (9th-13th century) have been entered together into UNESCO's World Heritage List. All three are typical examples of the octagonal architectural type and are decorated with mosaics of the highest quality. The monastery of Hosios Loukas was founded in the 10th century by the local saint of that name. It is on the slopes of mout Helikon and seems untouched by the hand of time, as the wider area is protected as one of exceptional natural beauty.

Nea Moni in Chios island was founded in the mid-11th century by the Emperor Constantine IX Monomachus. It, too, is hidden on a mountain, on the western slope of mout Provatas, amongst pines, olives, and low vegetation.

The monastery of Daphni was founded in the 11th century on the ruins of an ancient temple dedicated to Apollo Daphnaios and next to the ancient *Iera Odos* (Sacred Way), an area of special natural beauty. Today, it lies at the western entrance to Athens, an area that has become

Green details

A Chian tradition holds that three monks—Nikitas, Ioannis and Joseph—had taken shelter in a cave on mout Provatas. From there, every night, they could see a light shining in the woods. They decided to burn down the forest so they could find it! A myrtle bush survived the fire intact, with an icon of the Virgin Mary hanging from one of its branches. They decided to build a small church dedicated to the Virgin Mary on that spot. The unburned myrtle is reminiscent of the burning mentioned in the Old Testament.



© www.greece.com

heavily industrialised: if you drive past, you will see the walls of the monastery above the Athens-Corinth National Road. The adjacent Diomedes Botanical Garden provides abundant vegetation.

The monastery of Daphni is threatened by environmental pollution from the nearby industrial area, noise pollution from the National Road, and earthquakes. Damage due to earthquakes has been noted during many periods: the Frankish occupation, the Ottoman occupation, and later times. The earthquake of 1999 and the more recent one in 2019 caused further damage to the

monument and its surroundings. Nea Moni in Chios suffered serious damage in the powerful earthquake of 1881, and is also in danger from wildfires, which are a significant threat to the natural environment around monasteries.



© wikimedia.org

TAKE THE DIGITAL TOUR

The Monastery of Daphni:

http://odysseus.culture.gr/h/2/gh251.jsp?obj_id=1514

The earthquakes in Daphni:

<http://www.enet.gr/?i=news.el.article&id=186093>

Daphni Monastery from above:

<https://www.youtube.com/watch?v=uLNON1Y24cs>

The Monastery of Hosios Loukas: a stereoscopic film with 3D images:

<https://www.youtube.com/watch?v=9pfz7kCPPjY>

The Monastery of Hosios Loukas, Boeotia:

http://odysseus.culture.gr/h/3/gh351.jsp?obj_id=8081

Nea Moni, Chios:

http://odysseus.culture.gr/h/2/gh251.jsp?obj_id=1044

Nea Moni of Chios (Chios Ephorate of Antiquities):

<https://www.youtube.com/watch?v=EFgAfNlgyZo>

Threats to the monument:

<http://followodysseus.culture.gr/Portals/54/Material/Telika/Suntirisi/SuntirisiPDF/MathePerissotera.pdf>
p. 29-37



Archaeological
site of Delos



Cyclades
Prefecture,
Southern Aegean



Classical
period



Date of entry
into UNESCO's
List of World
Heritage Sites:
1990

At the centre of the Cyclades



© web-greece.gr

Delos, one of the smallest islands in the Cyclades, was once one of the most important and sacred islands in Greece, the base of the Delian League, and a cosmopolitan trading harbour.

According to myth, the invisible rock, which was floundering in the waves, 'dropped anchor' and emerged from the sea thus becoming the site of the birth of Artemis and Apollo, the twin children of Zeus and Leto. As soon

as Apollo was born, the landscape filled with flowers and light and nature awoke. The rocky island –with a maximum length of 5km and a width of no more than 1,300m– flooded with sunlight, was ideal for the worship of the God of light. During the Hellenistic and Roman periods, it was home to a thriving population, which reached 30,000.

The temple was built in the only small valley, to the north west of

Green details

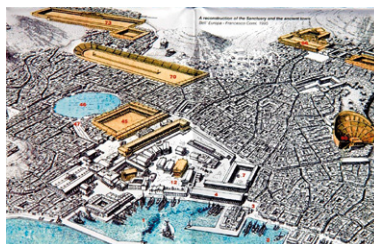
More than 500 plants have been recorded on this small and remote rock, many of which have medicinal qualities.

the island. There is no spring water on Delos, so private and public wells and drinking fountains were constructed, and every home had a cistern to collect rainwater. The rain formed a small seasonal stream, the Inopos, and the round Sacred Lake of Apollo, which was drained between 1925-26 because there had been cases of malaria.

Right in the centre of the Cyclades and next to Mykonos, the 'island of the winds', Delos is under threat. The famous Lions of Naxos (Terrace of Lions) were gradually being destroyed

by the wind and sea salt: to protect them, they have been replaced by copies.

The porous stone walls of the monuments have suffered serious damage and require annual re-enforcement and conservation work.



TAKE THE DIGITAL TOUR

The Archaeological site of Delos:

http://odysseus.culture.gr/h/3/gh351.jsp?obj_id=2371

Digital historical tours: Delos:

<https://www.youtube.com/watch?v=TyXmVJy9BBk>

The Time Machine: Delos, the tax haven:

<https://www.youtube.com/watch?v=ihW1KAQVxDo>

Threats to the monument:

<http://followodysseus.culture.gr/Portals/54/Material/Telika/Suntirisi/SuntirisiPDF/MathePerissotera.pdf>
p. 11-16

The consequences of climate change:

<https://www.kathimerini.gr/1030466/article/epikairothta/perivallon/oi-episthmones-kroyoyn-ton-kwdwna-toy-kindynoy-gia-tis-synepeies-ths-klimatikhs-allaghs-sta-mnhmeia-ths-dhloy>



Pythagoreion
and the Heraion
of Samos



Samos
Prefecture,
Northern Aegean



Classical
period



Date of entry
into UNESCO's
List of World
Heritage Sites:
1992

The wonders of nature and technology



© mouzakivillaz.gr

The largest temple in the world, according to Herodotus, was built on this beautiful island, which was the birthplace of goddess Hera and played host to her love affair with Zeus. The Heraion had a total of 155 columns, which were 21.5m tall. This colossal temple dedicated to Hera, work of Roikos and Theodoros, was destroyed by a powerful earthquake in the 6th century BC, just a few years before it could be completed.

A few kilometres farther on, the ancient capital of Samos, modern

Pythagoreio, was an important artistic centre during 6th century BC.

The island's plentiful water supply from rivers and lakes was connected with an amazing engineering achievement, the Tunnel of Eupalinos, an aqueduct also from the 6th century BC. The one-kilometre-long tunnel was simultaneously opened on both sides of the mountain with impressive precision. The aqueduct supplied the ancient city with water for over a thousand years.

At a strategic location close to the

Green details

According to Pausanias, the oldest sacred tree of the Greeks is on Samos: a chaste tree in the Heraion. Under this sacred tree the goddess Hera was born and educated.



© www.naturagraeca.com

coast of Asia Minor, verdant Samos is covered with thick forests, olive trees, fruit trees, and vineyards that produce the famous Samian wine. Based on this geographical context, the social and economic development of Pythagoreion and the Heraion was only to be expected. Many famous historical figures came to Samos, such as the philosopher and mathematician Pythagoras, the astronomer Aristarchus, and the historian Herodotus, who lived on the island for most of his life.

Samos is home to many important wetlands of great ecological value. Great and Lesser Glyfada, between the Heraion and Pythagoreion, comprise a wetland system of 70,000m², where many migratory birds nest while making a stop on their journey. The high level of humidity, the rainfall,

and stagnant water encourage the uncontrollable growth of vegetation on the Heraion. Wild plants, moss, lichens and micro-organisms are fond of the damp environment and incessantly cause damage.

In the northern hemisphere, lichens prefer the northern side of monuments, because they are exposed to less direct sunlight and can retain their moisture. On your next visit to an archaeological site, orientate yourself and check it out!



© wikimedia.org

TAKE THE DIGITAL TOUR

The archaeological site of the Heraion and Pythagoreion:

http://odysseus.culture.gr/h/3/gh351.jsp?obj_id=2366

ΗΡΑΙΑ-Αναπαράσταση αρχαιοελληνικής τελετής/An ancient Greek ceremony for the goddess Hera-Samos

<https://www.youtube.com/watch?v=Atj-n7wFwu8>

The Samos wetlands:

<https://www.naturagraeca.com/ws/ws/129,191,308,1,1,Τεχνική-Λίμνη-Γλυφάδας-Σάμου>

Threats to the monument:

<http://followodysseus.culture.gr/Portals/54/Material/Telika/Suntirisi/SuntirisiPDF/MathePerissotera.pdf>
p. 4-8, 31-34



The archaeological site of Aigai (Vergina)



Imathia Prefecture, Central Macedonia



Classical period



Date of entry into UNESCO's List of World Heritage Sites: 1996

Macedonian land



© aigai.gr

Aigai, 'the land of many goats', is on the foothills of the Pierian mountains, on the southern edge of the Macedonian plain. The first capital of the Macedonians was founded to the south of the Haliakmon river, in the heart of the area Herodotus called 'Macedonian land', the cradle of the Macedons. The river served as a natural defence against the dangers of the north and, at the same time, ensured direct access to the

sea, which was very close during this period.

The superb palace built by Philip II in the mid-4th century BC is believed to have been the largest building in classical Greece and is the only surviving example of a palace from this period in the Helladic region. In the summer of 336 BC, King Philip was murdered while at the theatre in Aigai, and his son buried him in the royal necropolis, in a tomb as

Green details

'But the most unexpected sight was a solid gold wreath of oak leaves and acorns, which was folded and placed on the bones. I could never have imagined such an inconceivable image!' This is how Manolis Andronikos describes the discovery of the tomb of Philip II.

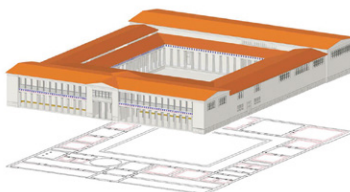
The oak branch, with 313 leaves and 68 acorns, is recreated in exceptional detail. The heaviest known wreath from ancient times, it weighs 750g: worthy of the great Macedonian king, as was the choice of oak, the sacred tree of Zeus.

grand as the palace. Truly impressive images, inspired by nature, decorate the facade of Philip's tomb: on a semi-woodland landscape, lions, bears, boars, and antelopes come face to face with hunters.

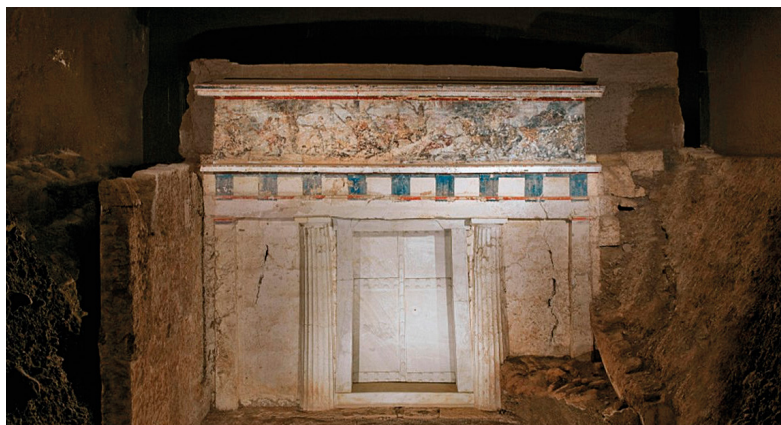
Aigai is one of the most popular archaeological sites in the country. The crowds of visitors can accidentally cause significant, sometimes irreparable, damage even by the slightest of actions: for example, the ultraviolet radiation of flash photography destroys the colour of frescoes that have been preserved

for centuries. For this reason, its use is banned when taking pictures.

The complex of royal tombs is protected by a modern subterranean museum in the form of a burial mound: this allows the whole of the complex, the structures, and their fresco decorations to be exhibited in a safe, controlled environment.



© etravels.gr



© theoc.gr

TAKE THE DIGITAL TOUR

A wealth of material about the archaeological site of Aigai:
<http://www.aigai.gr/el>

Aigai:
http://odysseus.culture.gr/h/3/gh351.jsp?obj_id=2362
 Digital three-dimensional tour of the royal palace of Philip at Aigai

A journey through 'spacetime' via the Digiart project:
<http://digiart-project.eu>.

Archaeological Site of Aigai - UNESCO World Heritage Site:
<https://www.youtube.com/watch?v=h6dnSpfXxAU>

Digital tours of significant cultural sites: Aigai:
<https://www.youtube.com/watch?v=JPSG--hnOuW>

The theatre at Aigai:
<https://en.calameo.com/read/00447008378444023e86f?authid=ZGVL4wvS9L7p>

How visitors should behave:
<http://followodysseus.culture.gr/Portals/54/Material/Telika/Suntirisi/SuntirisiPDF/SostiSymperiforaEpiskepton.pdf>



Monastery of Saint John the Theologian, Cave of the Apocalypse, Historic center of Patmos



Patmos Dodecanese Prefecture, Southern Aegean



Byzantine, Post-Byzantine and modern period



Date of entry into UNESCO's List of World Heritage Sites: 1999

The 'Jerusalem' of the Aegean



© wikimedia.org

A cave on a small island at the edge of the Aegean became famous to the whole of the Christian world and beyond: the Cave of the Apocalypse. The 'Jerusalem' of the

Aegean also includes the extremely important monastery of St John the Theologian and the traditional medieval settlement of Patmos Chora (main town).

Green details

The traditional houses on Patmos are built using natural raw materials. The basic material for the walls is local stone.

A variety of cypress wood, known as 'fida' in the local dialect, is used for the roof, combined with shrubs—called 'astives' (*Sarcopoterium spinosum*)—canes, and beaten earth. Ceramic tiles, cement with ground tiles, lime, sea sand, all products of the land of Patmos—processed to a greater or lesser extent using natural methods—complete the material and traditional building methods used in Patmian buildings.



© wikimedia.org

The Chora developed around the monastery, which dominates the top of a rise in the south of the island. The white houses are built very closely to each other, with flat roofs and create a tightly knit whole around the grey stone walls of the monastery. Between the monastery and the settlement, there is an open space with lush vegetation.

Possibly the greatest danger to the island of Patmos and its monuments is tourism. Crowds of tourists flock to the island of the Apocalypse on day-trips or on cruise ships.



© exploringgrecctv

TAKE THE DIGITAL TOUR

Patmos: The monastery, the cave and the Chora:
http://odysseus.culture.gr/h/2/gh251.jsp?obj_id=1489

Digital tour of the monastery of Saint John the Theologian:
<https://artsandculture.google.com/partner/patmos-monastery>

Bright paths 'Patmos, the sacred island':
<https://www.youtube.com/watch?v=PHaQJ8Bntlk>



Archaeological sites of Mycenae and Tiryns



Argolis Prefecture, Peloponnese



Mycenaean period



Date of entry into UNESCO's List of World Heritage Sites: 1999

In the heart of the Mycenaean world



Mycenae was founded between two high conical hills, Profitis Elias (805m) and Sara (660m), on the top of a naturally fortified hill: to the north and south, it is protected by ravines and is only accessible from the west. This strategic location, which controlled the plain of Argolis as well as road and maritime communication, in combination with the presence of subterranean springs on the site, was ideal as the base for the Mycenaean kingdom. The acropolis of Tiryns, also at a vital location near to the sea, dominated a large expanse of the plain that spreads to the coast of the Argolic Gulf.

In the case of both acropolises, the natural fortifications were re-enforced by the renowned Cyclopean walls, so impressive in their construction that the ancients believed that they had been built by the mythical one-eyed giants, Cyclops. Tiryns fully exploited the many natural advantages of the area. The plentiful agricultural production of the fertile plain and maritime trade were sources of wealth and contributed to the residential development of the city. Indeed, the choice of the hill was so rewarding that Tiryns experienced continuous inhabitation throughout the 12th century BC,

Green details

According to the legend Perseus, the mythical founder of Mycenae, gave it this name because, when he was thirsty, he found a fungus (mykita) and, when he pulled it up, discovered a spring of plentiful water. The Perseus Spring exists to the present day.

even after the gradual collapse of the Mycenaean world. In the lower acropolis of Tiryns, there are hidden tunnels that safely lead to subterranean cisterns.

Two magnificent lions (or possibly lionesses?) tirelessly guard the entrance to the 'golden Mycenae' of King Agamemnon. In 1802, when Lord Elgin visited the acropolis of Mycenae and saw the Lion Gate, he considered taking it to pieces and removing the renowned relief, but it seems that he did not have at his

disposal the appropriate equipment to transport it. Illegal excavations and the illicit trade of antiquities are the greatest man-made dangers to the monuments-witnesses of a distant but great past.



TAKE THE DIGITAL TOUR

The Archaeological site of Mycenae:

http://odysseus.culture.gr/h/3/gh351.jsp?obj_id=2573

<https://www.youtube.com/watch?v=9tyh569zqzg>

The Archaeological site of Tiryns:

http://odysseus.culture.gr/h/3/gh351.jsp?obj_id=2382

Mycenae from the air:

https://www.youtube.com/watch?v=xx_66wuam1o

Ancient Tiryns:

<https://www.youtube.com/watch?v=ZEUgGaLEB5c>

The acropolis of Mycenaean Tiryns:

<https://www.youtube.com/watch?v=czqwTCpDK0k>

Tiryns from the air:

<https://www.youtube.com/watch?v=czqwTCpDK0k>

3D representation of Mycenae:

<https://www.youtube.com/watch?v=QG9v6A0A9HQ>

3d-animation documentary:

<https://www.i-pinakas.com/gamma-omicron-muupsilonkappaetanualpha938kappaomicronsigma-piomicronlambdaiotatauiotasigmamuomicronsigma/3>

Mycenae and Mycenaean acropolises:

<https://mycenaegr.wordpress.com>

Mycenae. The mythical kingdom of the lions. Mycenae. The kingdom of the lions. Up Drones Greece:

https://www.youtube.com/watch?v=xx_66wuam1o

The dangers of the illicit antiquities trade:

<http://followodysseus.culture.gr/Portals/54/Material/Telika/Suntirisi/SuntirisiPDF/MathePerissotera.pdf>
p. 47

The documentary 'The Network' by Andreas Apostolidis on the illicit trade in antiquities:

<https://www.youtube.com/watch?v=plb2viM1KXY>

'Stolen Past, Lost Future':

<https://en.calameo.com/read/004470083a0a8123c85f8>

Promotional video for the international exhibitions of the Ministry of Culture and Sports:

<https://www.youtube.com/watch?v=i--9OhdJju8&feature=youtube>



Old town of
Corfu



Corfu Prefecture,
Ionian Islands



Venetian
occupation,
modern period



Date of entry
into UNESCO's
List of World
Heritage Sites:
2007

The gateway to Venice



© fairworld.gr

The old town of Corfu occupies the north-east edge of the modern city, on the east coast of the island. The two peaks that the traveller observes when approaching the island gave it its Byzantine name of Koryfo (peak), of which Corfu is a corruption. The 'Grand lady of the Ionian' is one of the best-preserved examples of fortification architecture.

In 1386, Corfu was annexed by the 'Most Serene Republic of Venice' and remained under Venetian rule until 1797: the year the Venetian Republic fell to Napoleon. The 'gateway to Venice', with its powerful fortifications, effectively resisted the four sieges by the Ottoman fleet. In the old town, greenery and vegetation abound in the parks and open

Green details

The Old Town of Corfu is the first urban centre in the Helladic region in which multi-storey residences were built, an important factor in the study of urban architecture. Multi-storey residences were chosen to save up space in the densely populated city.



© wikimedia.org

areas. The historic Spianada Square covers 1/3 of the area of the historic centre of the city. It is the largest square in Corfu and the whole of Greece. The square was originally created by the demolition of residences and was afterwards planted with trees.

The damp Corfiot climate, with its excessive precipitation, and the effects of the sea winds are the basic threats to the monuments of the Old Town. The water penetrates the

building material, causing erosion and cracks, gradually reducing their endurance. The high humidity also corrodes metals and degrades wood.



© wikimedia.org

TAKE THE DIGITAL TOUR

The old town of Corfu:

<https://whc.unesco.org/en/list/978/>

Tours of the city and the island of Corfu:

http://followodyseus.culture.gr/nine_places_tell_their_story/Kerkira/Kerkira_Pdf.html

Virtual tour of the old Municipal Theatre of Corfu:

https://www.youtube.com/watch?v=Ptq02KBG84Q&list=RDC_JWwfweiNg&index=4

Corfu from above:

https://www.youtube.com/watch?time_continue=1&v=ARMy5vQdjcc&feature=emb_logo

The history of Corfu:

https://www.youtube.com/watch?v=C_JWwfweiNg

Virtual tour of the churches of the Metropolis of Corfu, Paxos, and Diapontian Islands:

<http://www.corfuchurches.com/index.php>

Threats to the monument:

<http://followodyseus.culture.gr/Portals/54/Material/Telika/Suntirisi/SuntirisiPDF/MathePerissotera.pdf>
p. 4-8, 11-14



Archaeological site of Philippi



Kavala Prefecture, Eastern Macedonia and Thrace



Greco-Roman, Paleo-Christian and Byzantine periods



Date of entry into UNESCO's List of World Heritage Sites: 2016

‘I shall see thee at Philippi’



The ancient city of Philippi was founded at the edge of the marshes that covered the south-east section of the Drama plain. Here began the only road to join the coast with the interior of Thrace. Philippi has preserved the classical, Roman, and Early Christian city and is connected with events and watersheds in European culture.

The fertile land and a plentiful supply of water favoured the development of agriculture, whereas the easy access to the forests provided wood for shipbuilding. The area was also rich in precious metals (gold, silver), due to the ore-bearing zones of Paggaion and Orvilos mountains. After the occupation of the Macedonians in the 4th century BC, a large

Green details

Before it was named after Philip II, king of the Macedonians, the city was sometime known as Crenides and sometime Daton. The name Crenides came from the plentiful supply of water, which has flowed throughout this area from ancient times. The name Daton echoes the famous fertility of the area and is expressed in an old saying.

part of the marsh was drained. Later, the renowned Egnatia Road (*Via Egnatia*) passed through the city of Philippi. Besides, all roads lead to Rome!

Around 200,000 men clashed in the Battle of Philippi in 42BC, between Mark Anthony and Octavian Augustus of the *Triumverate* and Brutus and Cassius of the democratic *Liberatores*, who assassinated Julius Caesar. The position chosen by Cassius between the hills and the marsh was strategic from a defensive point of view. However, Anthony created a pass through the marsh. And so, after a battle lasting three weeks, the democratic

forces were defeated, and Brutus' dream turned out to be prophetic: 'I shall see thee at Philippi!'

Philippi was the first European way-point of the apostle Paul, who preached here and –according to tradition– baptised the first European Christian, the merchant Lydia, in a stream on the western edge of the city, and was eventually imprisoned.

From the 1930s, the old Kavala-Drama National Road went through the archaeological site. Nowadays, significant unification and upgrading works in the archaeological site impose the abolition of the road network.



TAKE THE DIGITAL TOUR

The Archaeological site of Philippi:
http://odysseus.culture.gr/h/3/gh351.jsp?obj_id=2387
<https://www.youtube.com/watch?v=4niLHgxydQc>
https://www.youtube.com/watch?v=AwHI_lq-Zbl
<https://youtu.be/-UWysjOC9I4>

Archaeological guided tours. Ancient Philippi (1988):
<https://www.youtube.com/watch?v=18phk7LyPng>

The ancient theatre of Philippi:
<https://en.calameo.com/read/004470083b02bc18aa13d?authid=XJggewwrSFnj>

The Municipality of Philippi:
<http://users.otenet.gr/~filippi/history1.html>

... and next time?

At this point, our virtual tour through the listed monuments of Greece comes to an end. However, the List of World Heritage Sites does not, as new sites are added very often! The next time you visit them in reality, observe the landscape and the environment, wander where great leaders and kings, famous athletes, skilled craftsmen, scholars and artists, priests and monks, high officials, rich merchants, as well humble toilers once lived and worked; discover the 'green details' *in situ* and cogitate the dangers that threaten them.

TAKE THE DIGITAL TOUR

<http://followodyseus.culture.gr/Portals/54/Material/Telika/Suntirisi/SuntirisiPDF/SostiSymperiforaEpiskepton.pdf>

<http://followodyseus.culture.gr/Portals/54/Material/Telika/Suntirisi/SuntirisiPDF/ProliptikiSuntirisi.pdf>

<http://followodyseus.culture.gr/Portals/54/Material/Telika/Suntirisi/SuntirisiPDF/MathePerissotera.pdf>
p. 44-46

...and then take action to contribute to their protection. And why not adopt a monument!

ADOPTING MONUMENTS

<http://followodyseus.culture.gr/Portals/54/Material/Telika/Suntirisi/SuntirisiActs/UiothesiaMnimeiou.pdf>

Linking biodiversity conservation and sustainable tourism at World Heritage Sites:
<https://whc.unesco.org/en/activities/66/>





HELLENIC REPUBLIC
Ministry of Culture and Sports

General Directorate of Antiquities and Cultural Heritage



Directorate of Archaeological Museums,
Exhibitions and Educational Programmes
Department of Educational Programmes and Communication



European Union
European Social Fund

Operational Programme
Human Resources Development,
Education and Lifelong Learning

Co-financed by Greece and the European Union



ISBN 978-960-386-489-9